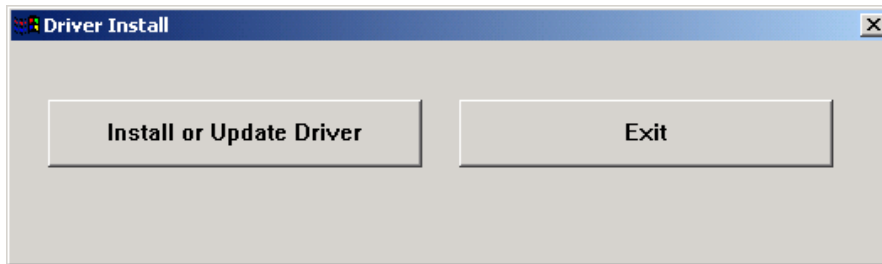


Installing the Hardware and Software

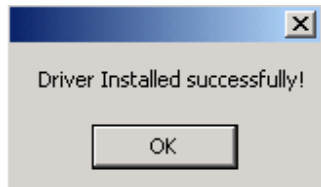
Hardware Installation

To install the card to your PC, follow these steps:

1. Insert the card into an empty PCI slot.
2. Turn on your PC and start Windows.
3. The Hardware Wizard in Windows detects this newly installed card and appears. Ignore the wizard window and keep on the following step.
4. Insert the installation CD into the CD-ROM drive.
5. Enter [Driver] folder and execute Driver Install.exe, appear following windows:



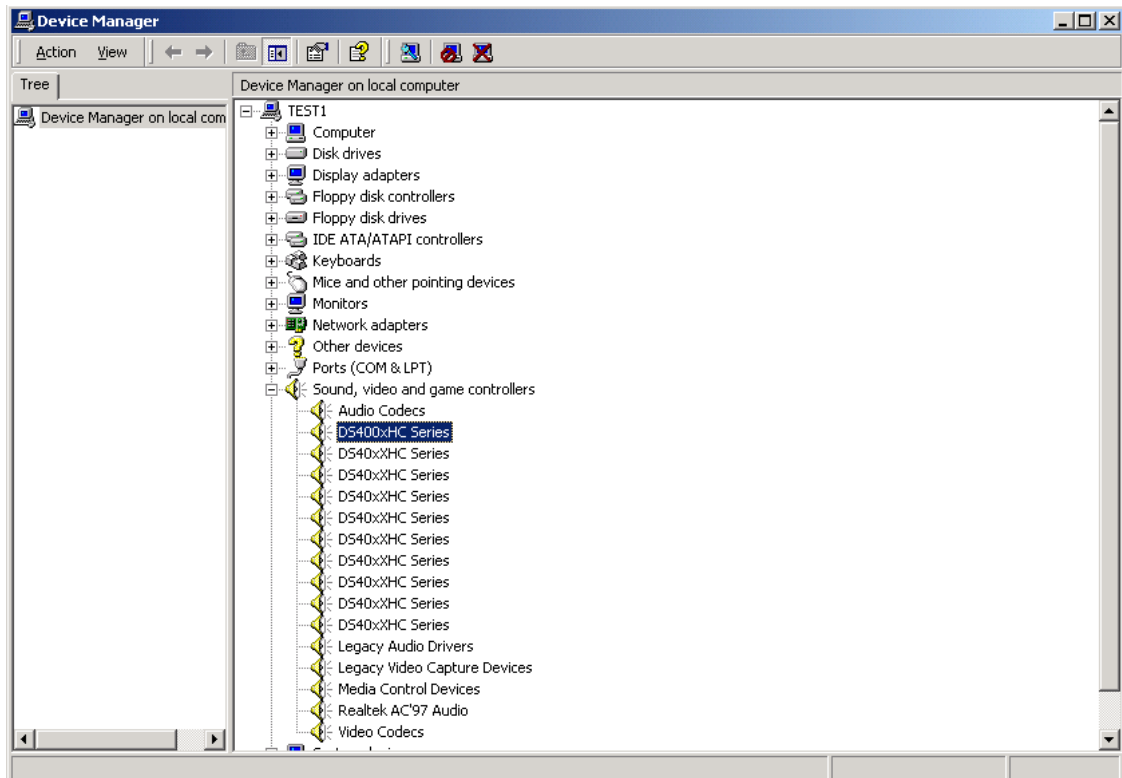
6. Click [Install or Update Driver] button to install the driver. It will appear following window after installing it..



7. Click [Exit] to exit the window.

Note: You can check if the driver is installed through the following way.

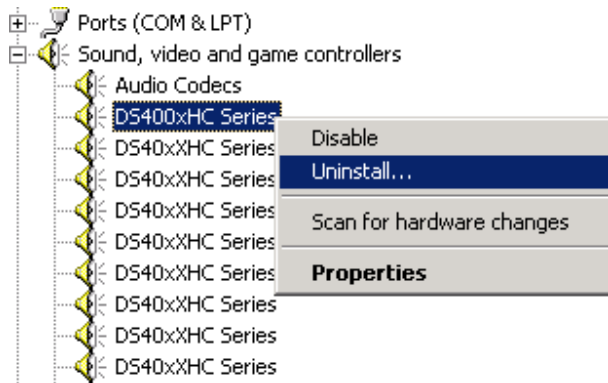
Enter [Computer Management], Click [Device Manager], Select [Sound, video and game controllers], see following window:



If you find [DS40xxHC Series] items, install successfully.

Note: If you want to remove the driver, please do it according following steps:

Select [DS40xxHC Series] item, Click right key then appear windows:



Select [Uninstall].

8. Following picture shows the cable of connecting video and audio.

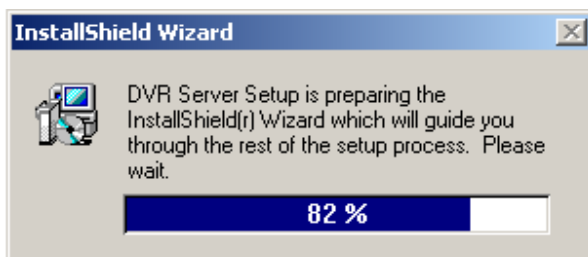


Note: One cable is 4 channels video and audio input. The red lines show video input and the white lines show audio input. Following picture shows how to connect to card with cable.

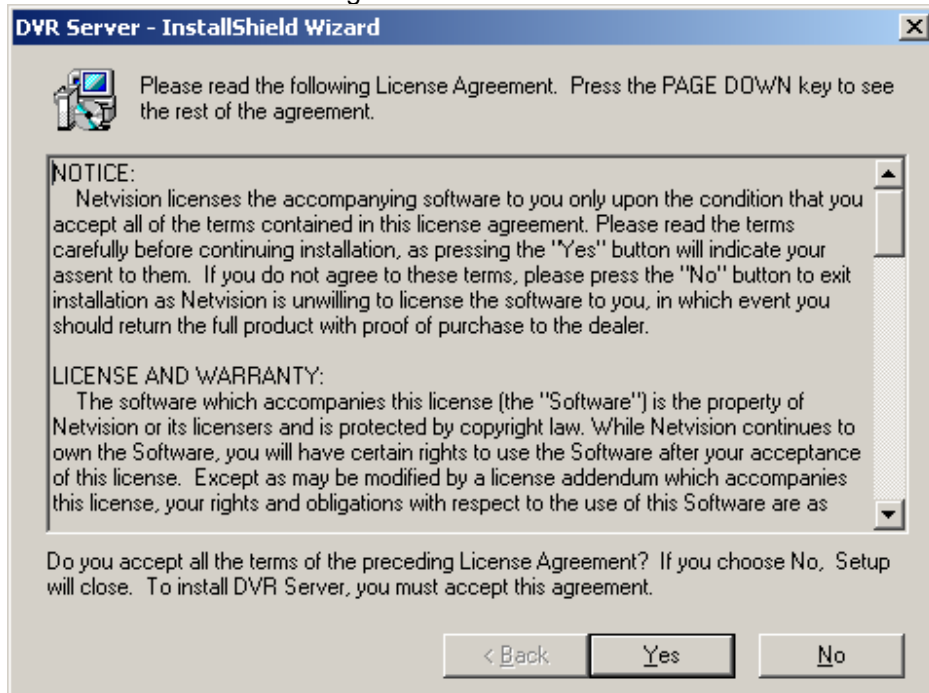


Software Installation

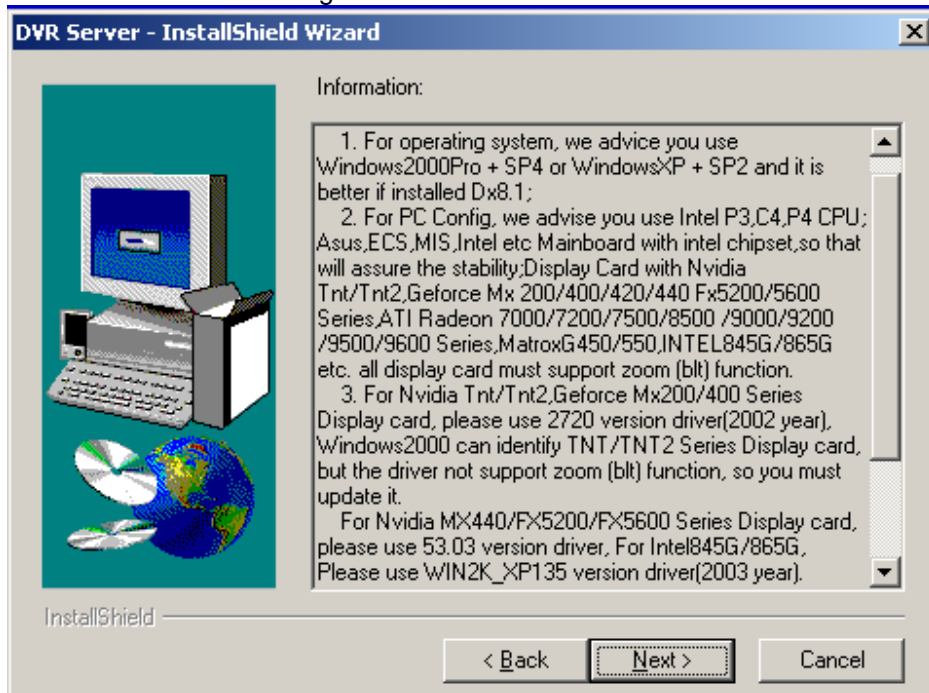
1. Insert the installation CD into the CD-ROM drive.
2. Enter software folder and execute Setup.exe. It will show following installation interface:

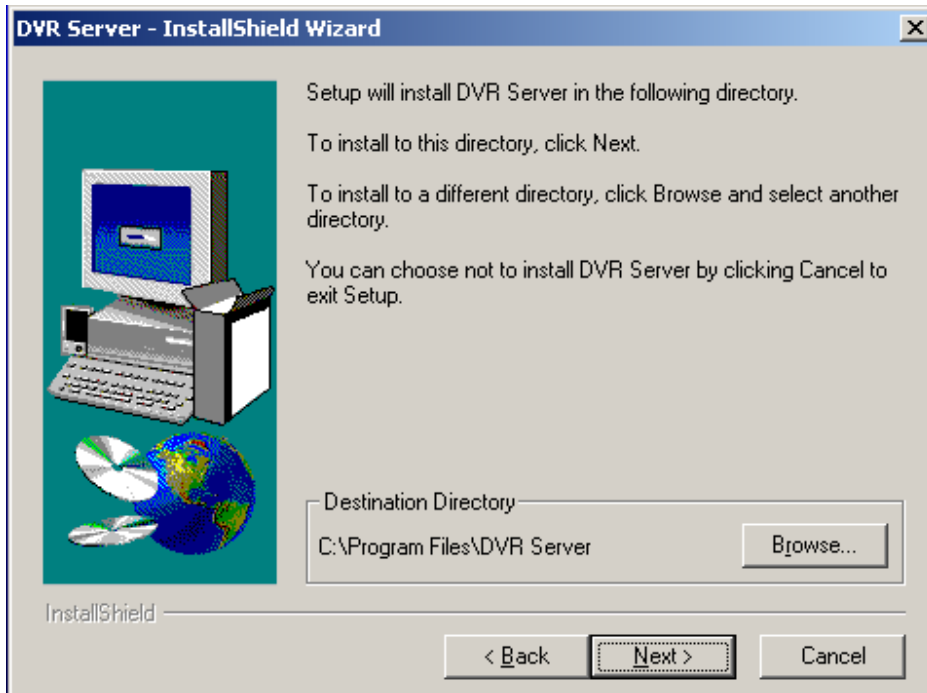


Some information License agreement:



Some Information of configure we recommend about OS and Hardware.





Click [Next] and use default installation directory.

3. Follow the on-screen instructions to complete the installation. It will create a shortcut on desktop.