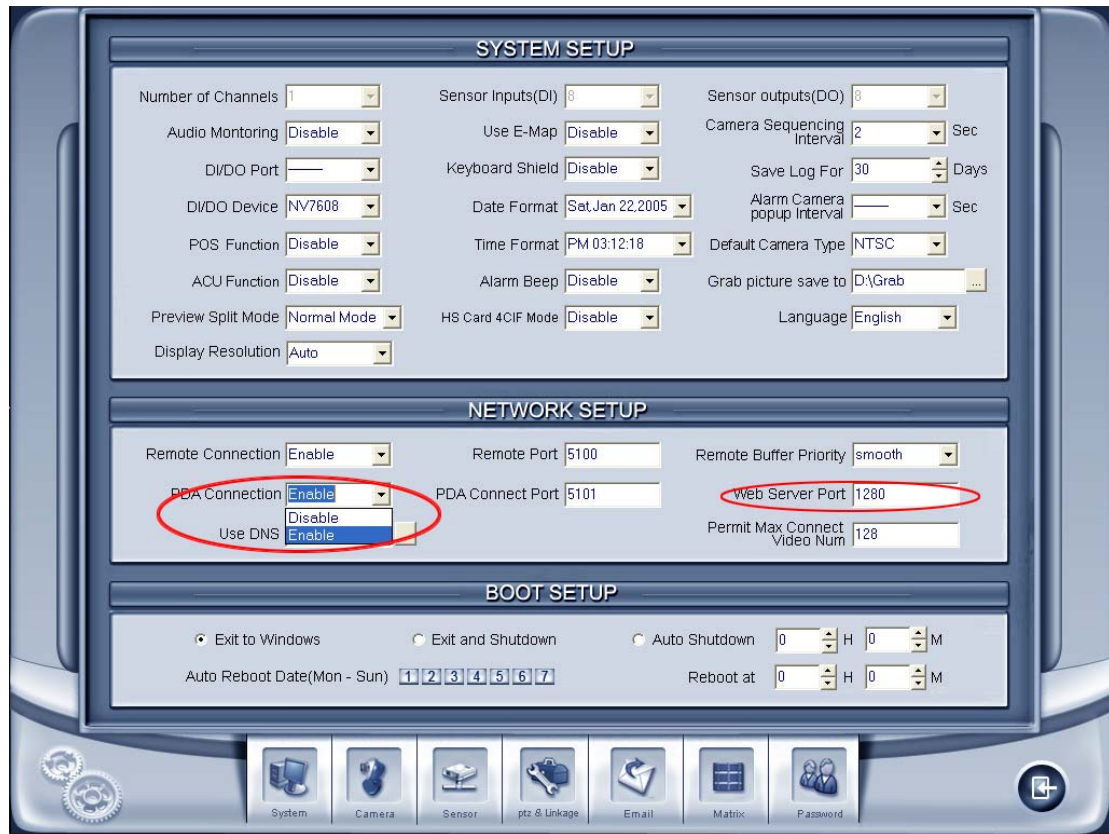


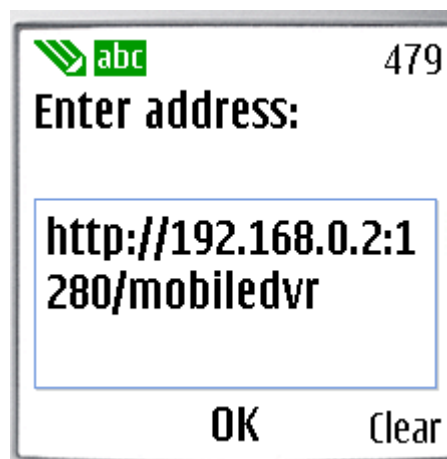
Step 1: To allow mobile phone connect

Open the PDA function of your DVR, check the web server port of your DVR and remember it



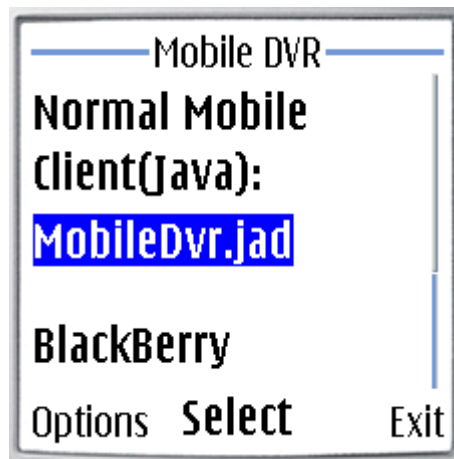
Step 2: Connect the DVR to get file

Open the browser of your mobile phone and input as below: <http://192.168.0.2> (IP of your DVR):1280 (Web server port of your DVR)/mobiledvr, the IP is your DVR's IP and the port is the web server port of your DVR



Step 3: Download files

Download the files, after downloaded the program will be installed automatically. For smart phone, please download the file named mobiledvr.jad; for BlackBerry, please download the file named BlackBerry.jad



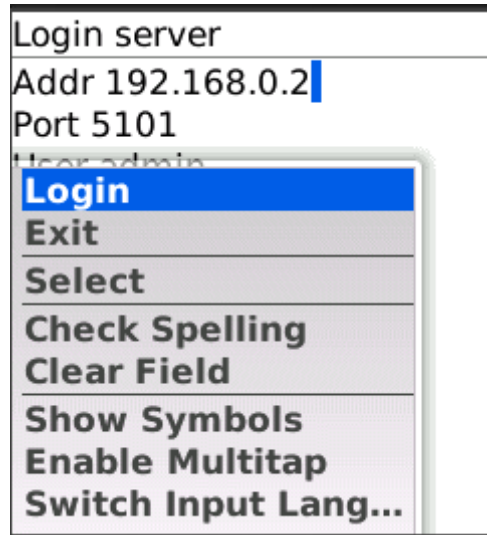
Step 4: Run program

Run the program. For smart phone, the program will run automatically after installing; for blackberry, please run the program named BlackBerry showed as below.



Step 5: Login

Input the IP of your DVR and login, choose the camera and select preview, then you can get the video.



For BlackBerry, if you can't get connected the DVR, please check your set of APN. Try following steps: Option-Advanced_option-TCP-APN

- 1, Hit the menu button and select Setup
2. Scroll down to "Enable Personal setting" and check that box.
3. In APN field enter the name of your APN